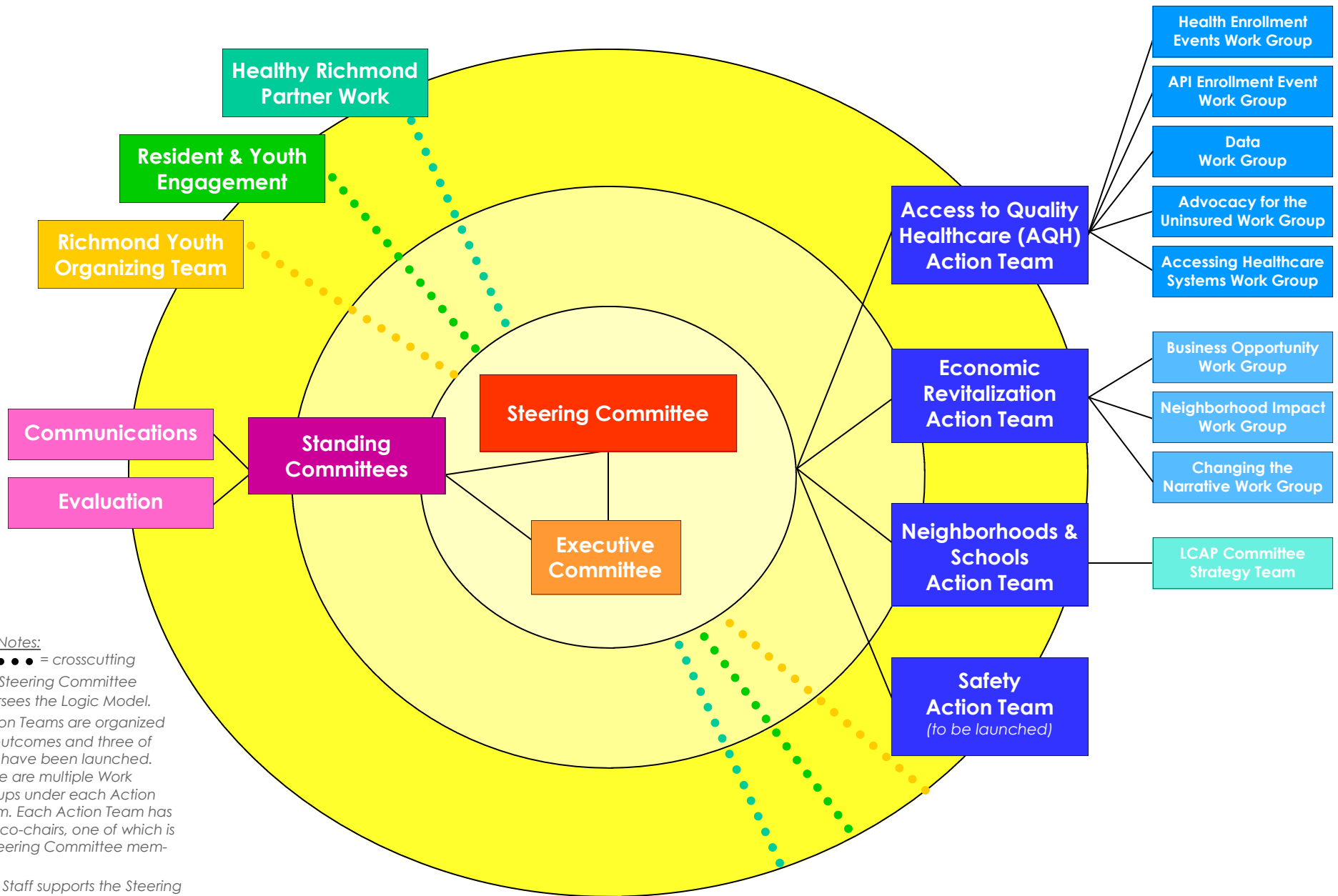


Healthy RICHMOND HUB STRUCTURE



Key & Notes:

- = crosscutting
- The Steering Committee oversees the Logic Model.
- Action Teams are organized by outcomes and three of four have been launched. There are multiple Work Groups under each Action Team. Each Action Team has two co-chairs, one of which is a Steering Committee member.
- Hub Staff supports the Steering Committee, Standing Committees, Executive Committee and Action Teams.